

Líonra Rannpháirtíochta Poiblí Chontae na Gaillimhe



Comhairle Chontae na Gaillimhe
Galway County Council

Galway County
Public
Participation
Network



Ag obair le chéile - ag múnlú ár todhchaí | Working together - shaping our future

PPN

June 2017

Profile of County Galway PPN Membership

<i>Total Number of Groups Registered</i>	677
Community and Voluntary College	576
Social Inclusion College	93
Environmental College	8
Ballinasloe Municipal District	152
Connemara Municipal District	158
Loughrea Municipal District	105
Oranmore/Athenry Municipal District	95
Tuam Municipal District	122
County Wide Organisations	45

Rural Ireland Action Plan and the PPN

Develop the Public Participation Networks (PPNs) to ensure all local groups can input to local decision making processes by:

- Providing funding for a Resource Worker for each PPN; –
- Providing a database for each PPN's registered local community organisations; –
-
- Rolling out local training and capacity building; –
- Developing and improving a practical PPN User Guide; and –
- Establishing a National PPN Advisory Group, fully representative of all PPN stakeholders.

Consult extensively with the PPN Network and sectoral interests in developing Regional Spatial and Economic Strategies.

Community Pillar PPN

Residents Groups, Self-help Groups, Community Councils, Issue Based Groups, Youth Groups, Community Associations, Sporting/ Leisure Clubs/Groups, Voluntary Campaign Groups, Arts Groups, Broad Based Service Provision Groups, Active Retirement Groups, Playground Associations, Festival Groups

Social Inclusion Pillar

Disability Groups, Traveller Groups, Ethnic minority Groups, Women's Groups, Family Support Group (FRC's), Literacy Groups, Older Peoples Groups, Social Justice Groups, Groups promoting equality LGBT Groups, Youth Service and Groups, Children Services and Support Groups, Mental Health / Suicide Prevention Groups, Drug and Alcohol Support Information Groups, Rural Isolation and Disadvantage Groups, Urban Disadvantage Groups

Environment Pillar

An Taisce, Bat Conservation Ireland, Bee Keeping Associations, Bird Watch Ireland, Friends of the Earth, Butterfly Conservation Green Schools, Green Campuses, Green Communities, Ireland CRANN, Forest Friends, ECO UNESCO Feasta

What is the Public Participation Network ??

- Mechanism to facilitate & support input by the community sector into decision making by Local Authorities and other local policy making structures
- Statutory basis in the Local Government Reform Act 2014 - first time in history of state there is a statutory framework for community representation through the 3 pillars. *Social Inclusion, Community & Voluntary & Environmental Groups*
- Framework for Public Participation in local government adopted by the council in 2015 – the PPN cannot be bypassed by the Councils policy making structures – and is subject to Dept. regulation

Líonra Rannpháirtíochta Poiblí Chontae na Gaillimhe



Galway County
Public
Participation
Network



Ag obair le chéile - ag múnlú ár todhchaí | Working together - shaping our future

What will the PPN do for you ??

- The opportunity to work with the PPN's elected representatives who are responsible for pursuing issues through local social structures**
- The opportunity to influence and change local government policy. Keep informed of local government plans and decisions for your area**
- Keep in touch with other community & voluntary groups in the county with a similar focus**
- Receive regular mailings and updates from PPN members including representative reports**
- Receive information on upcoming funding opportunities**
- The opportunity to attend information sessions/seminars on topics of interest to member groups**
- Receive support with the development of policies and Constitutions for your groups**
- The opportunity to avail of a greatly reduced insurance premium through the Community & Voluntary Forum group insurance scheme**

Why a Public Participation Network ??

- **Challenge:** To develop effective processes for real citizens engagement in Local Government
- **Democratic Deficit:** – alienation disconnection
- **Improve Local Decision Making:** -informed by wide range of local expertise and knowledge from Community & Voluntary, Social Inclusion and Environmental sectors
- Ensure **Wider Access** to decision making – open and inclusive policy making – improves democracy

Líonra Rannphairtíochta Poiblí Chontae na Gaillimhe



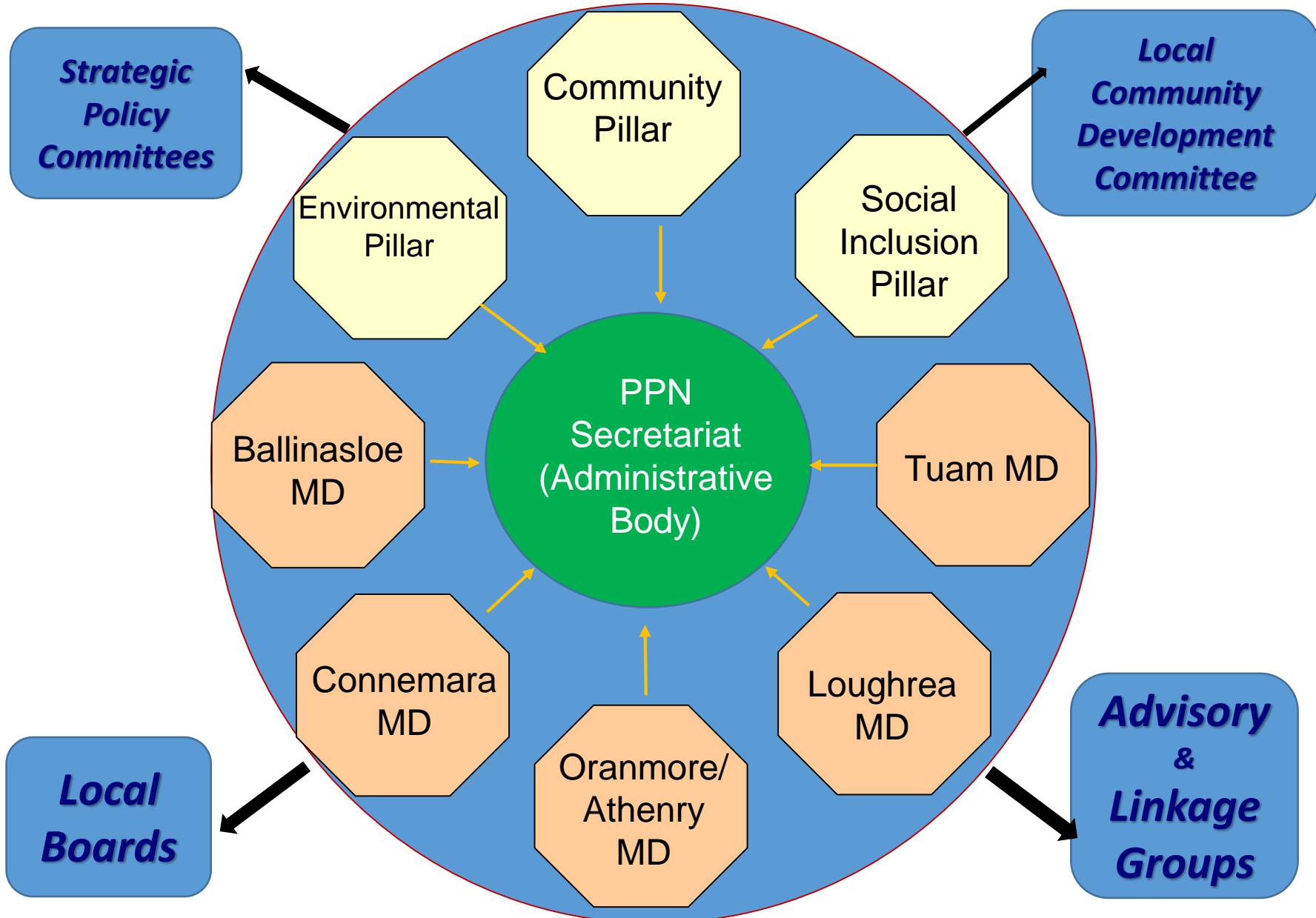
Comhairle Chontae na Gaillimhe
Galway County Council

Galway County
Public
Participation
Network



Ag obair le chéile - ag múnlú ár todhchaí | Working together - shaping our future

County Galway Public Participation Network Structure



County Galway PPN Secretariat Members (11)

Ballinasloe MD
Dan Dowling

Connemara MD
Karen Mannion

Loughrea MD
Josephine Gardiner

Oranmore/ Athenry MD
Vincent Lyons

Tuam MD
Jarlath Canney

**Community
Pillar**

Sandra Shattock
Tom Madden

Environmental Pillar

Aingeal Ní Chonghaile
Vacancy to be filled

**Social
Inclusion
Pillar**

David Collins
Martin Ward

County Galway PPN Secretariat Targets for 2017

- Hold County Plenary as per Dept. guidelines **(2 held so far)**
- Make Communities more aware of the PPN and what it can do for them. **(On going project through emails etc.)**
- Help community reps on to play a more active role on the SPC's
- Adopt a Constitution for PPN Members and Secretariat **(Done)**
- Increase PPN membership to more than 700 Groups **(677 so far)**
- Setup Linkage Groups i.e. Community Alerts by Municipal District
- Revise “Best Practice Booklet” To reflect PPN and other changes
- Get County Galway PPN on Social media with regular Newsletters
- Continue Partnership building with Leader and other Statutory Bodies

Líonra Rannphairtíochta Poiblí Chontae na Gaillimhe



Comhairle Chontae na Gaillimhe
Galway County Council

Galway County
Public
Participation
Network



Ag obair le chéile - ag múnlú ár todhchaí | Working together - shaping our future